

In this TRAIL E-LINK

- ❖ [Cum Laude Promotion](#)
- ❖ [New PhD student](#)
- ❖ [Promotions December](#)
- ❖ [Courses](#)
- ❖ [For TRAIL PhD's/Supervisors](#)
- ❖ [Other events](#)

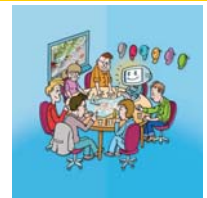
Dear TRAIL member,
This is the TRAIL *E-LINK* of January. TRAIL *E-LINK* will keep you informed of the ins and outs of TRAIL Research School.

The TRAIL Office

**Ben, Vincent, Conchita, Felicita, Vera, Lynn and Esther
want to wish you all the best for a
Wonderfull, Healthy and Happy New (TRAIL) Year!!**

CUM LAUDE PROMOTION OF MAAIKE SNELDER

On December 1st TRAIL PhD Student Maaïke Snelder (TUD, TBM/TNO) defended her thesis 'Designing Robust Road networks - A general design method applied to the Netherlands' and got a cum laude recognition. You can find the press release of the thesis [here](#). She also made a promotion movie, you can find that [here](#). (all in Dutch)



NEW PHD STUDENT



William Sierzchula (DUT/TBM) on "The Environment of Early Adaptors from an Innovation's Perspective". William will perform his research at the Faculty Technology, Policy and Management of the Delft University of Technology. His promoter is Prof. Bert van Wee.

PROMOTIONS OF DECEMBER

Nam Seok Kim (DUT/OTB) on "Intermodal Freight Transport on the Right Track? Environmental and Economic Performances and their Trade-off". This dissertation aims to evaluate environmental and economic performances of an intermodal freight transport system and to estimate the trade-off between CO₂ emissions, which is represented as an indicator of environmental performance, and freight costs, which indicate the economic performance of the intermodal freight system.





Yusong Pang (DUT/3ME) on “Intelligent Belt Conveyor Monitoring and Control”. Traditional inspection and monitoring of large-scale belt conveyors focus on individual critical components and response to catastrophic system failures. The research of intelligent belt conveyor monitoring and control presents the possibilities to improve belt conveyor performance by means of integrating the information derived from traditional individual monitoring systems to automate and optimize the process of maintenance and operational control decision-making, based on the overall status of belt conveyors.

Jan Kwakkel (DUT/TBM) on “The Treatment of Uncertainty in Airport Strategic Planning”. This dissertation explores how the treatment of uncertainty in airport planning can be improved. The current approach limits the exploration of possible futures to those that are judged to be most likely. This dissertation present an alternative approach that results in a plan that consists of time-urgent low regret options that can be taken immediately, together with a framework for guiding future actions based on monitoring developments and taking predefined actions when needed. This dissertation also provides computational evidence for the efficacy of this new approach.



Francesco Corman (DUT/CEG) on “Real-time Railway Traffic Management: Dispatching in complex, large and busy railways networks” The low attractiveness of railway mode is mostly due to unreliability and delay propagation. The thesis addresses real-time railway traffic management to solve infeasibility and train conflicts, optimizing train orders, passing times, routes and departure times during operations over complex, dense and large networks. A detailed mathematical formulation is used to compute advanced control actions that optimally minimize delay propagation.

COURSES

20, 27
January +
3, 10
February

[Subscribe](#)

PROM-1: Getting started in a PhD project

For a young researcher getting started on a PhD project presents quite a challenge. In order to be successful the PhD student has to acquire a scientific attitude and learn to operate beyond the limits of established knowledge. The workshop aims at providing tools and insight for PhD students which is designed to help them get started successfully on their own research projects. The participants learn how to brainstorm, operationalize research questions, plan projects and find ways of increasing self-knowledge and producing assertive communication in order to improve their own research proposals

PROM-4: Scientific Writing in English

The aim of the course is to improve participants' ability to write papers, reports or a PhD dissertation in English. The focus will be on technical, scientific English, but the course will also be useful for people writing about non-technical subjects.

The course consists of ten two-hour sessions. As we look at various aspects of the writing process and at specific language problems, you will create a text (an academic article, a chapter of your dissertation or whatever is relevant for you) in a systematic manner.

February –
April 2011

[Subscribe](#)

MORE INFORMATION AND MORE COURSES ON WWW.RSTRAIL.NL

COURSES INTERESTING FOR PHD STUDENTS/PHD SUPERVISORS

- ❖ [PhD-supervisor as coach](#) by Aletta Wubben (only for DUT supervisors)
- ❖ [NWO Talent Classes](#)
- ❖ Course 'Endnote' by TU Library
- ❖ Course 'Research Methodology' by Transportnet (see <http://www.transportnet.org>, chose 'courses' tab, and 'Research Methodology')

OTHER EVENTS

7 January: Dies Natalis by TRAIL Staff member **Prof. Serge Hoogendoorn**: "Order in Chaos of Traffic: *Si Vis Pacem, Para Bellum!*". Information and registration (in Dutch): www.tudelft.nl/dies

23 – 27 January: 90th TRB Meeting on Transportation, Livability, and Economic Development in a Changing World in Washington D.C., USA.

11 February: Inaugural Lecture by TRAIL Scientific Director **Prof. Ben Immers**: "Working with Networks". Invitations for this event will be send soon!

22 & 23 February: 1st Asia-Pacific conference on Qualitative Research in Web 2.0 in Macau (China). [More info here](#)

24-25 February: 2nd Annual Computer-Aided Qualitative Research Asia in Macau (China). [More info here](#)

29 March: Rail Tech Europe 8th International Conference & Exhibition on Rail Technology in Amersfoort. [More info here](#)

22-24 June: 2nd International Conference on Models and Technologies for Intelligent Transportation Systems @ Katholieke Universiteit Leuven. [More information](#) & [contact](#).

TRAIL Research School

Kluyverweg 4
2629 HT Delft

Telephone

(+31) (0)15-27 86046

Telefax

(+31) (0)15-27 84333

E-mail

info@rsTRAIL.nl

Visit our website!

www.rsTRAIL.nl

UNSUBSCRIBE

E-LINK?

Please [E-MAIL](#) us

PLEASE VISIT OUR WEBSITE: WWW.RSTRAIL.NL